
Loadpoint Bearings Knowledge Base

Rotary Tables Category
Specifications and Applications

Contents

Rotary Tables	1
<i>Rotary Tables Performance Specification Figures are quoted at 5.5 bar air supply pressure</i>	1
<i>High Rigidity Rotary Tables</i>	1

Rotary Tables

Specifications and Applications

Rotary Tables Performance Specification Figures are quoted at 5.5 bar air supply pressure

Rotary Tables Performance Specification Figures are quoted at 5.5 bar air supply pressure

Axial Stiffness
200 N/um

Radial Stiffness
70 N/um
(at position P)

Maximum Axial Load
136 Kg

Maximum Radial Load
61 Kg
(at position P)

Axial Running Error
0.25 um
(peak to peak)

Tilt Motion Error
0.013 m/rad
(peak to peak)

Maximum Speed
15 rpm
(For recommended drive and encoder)

Maximum Continuous Torque
6.5 Nm

Maximum Peak Torque
75 Nm

High Rigidity Rotary Tables

High Rigidity Rotary Tables

Loadpoint Bearings, a leading supplier of high precision rotary tables to the electronics and machine tool industries offers the H Section line of high rigidity rotary tables with double thrust plate design for increased rigidity under load.

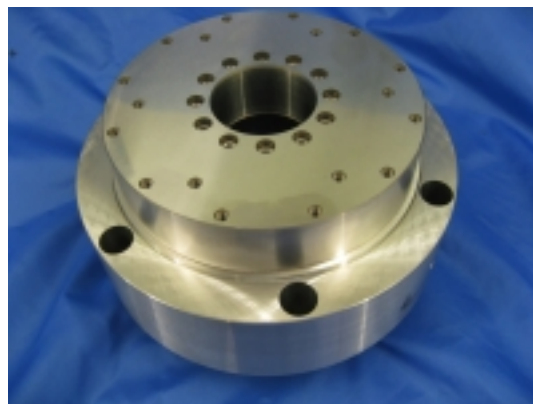
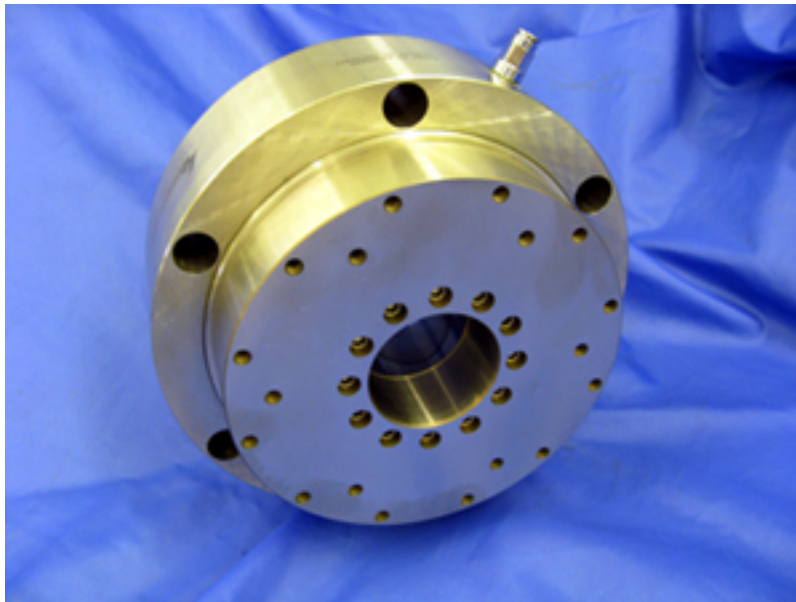
All high rigidity rotary tables feature low axial motion errors 20-50nM and less than 1 micron static runout (once per revolution).

All of our high rigidity rotary tables may be driven by belt with an external motor or direct drive motor. Positional resolution down to 0.1 arc/seconds with encoder and DC brushless motor. Loadpoint Bearings can give application support on motors, encoders and controller.

Features include large diameter central through hole for vacuum or coolant. Rotary couplings can also be fitted and supplied.

These High Rigidity Rotary Tables are compatible with other short, blocky shaped spindles made for oversize loads and still give optical quality resolution.

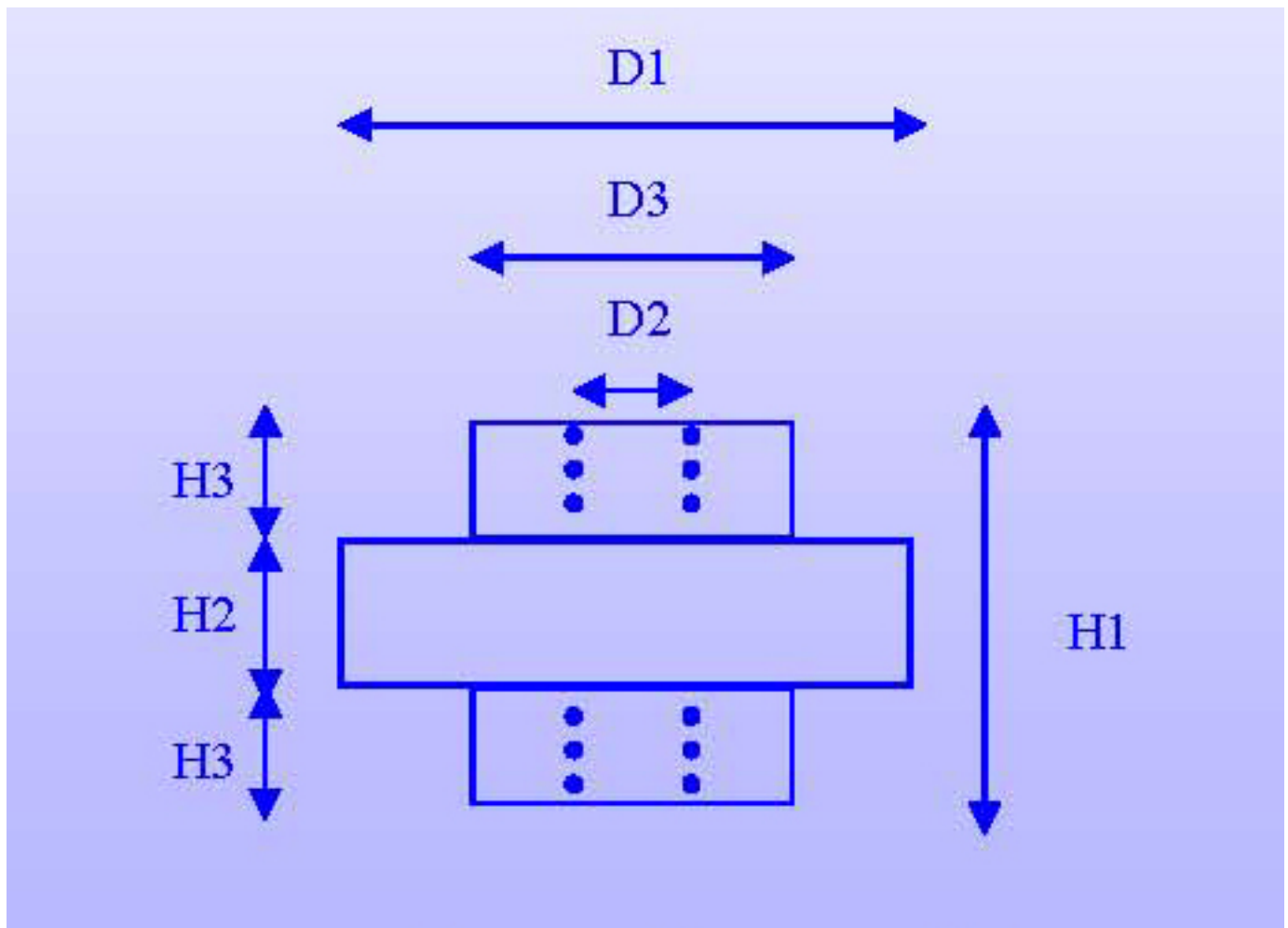
Improve your rotary table technology with the benefits of:



Axial stiffness range from 600-1235N/microns

Load range from 1400-3500N

RPM range 1500-5000 RPM



SPECIFICATION

UNITS/PN#

D06960/6

D06960/8

D06960/10

D06960/12

D1

mm

200

240

300

350

D2

mm

50

60

80

100

D3

mm

155

195

247.6

300

H1

mm

130

160

170

240

H2

mm

70

74

76

90

H3

mm

30

43

47

75

Air Pressure

Bar

6

6

6

6

Air Consumption

L/min

15

20

35

40

Axial Stiffness

N/u

600

705

1176

1235

Radial Stiffness

N/u

150

167

206

392

Radial Load

Nm

500

600

700

800

Axial Load

Nm

1400

1800

3000

3500

Axial Runout (dynamic)

nM

1400