
Loadpoint Bearings Knowledge Base

All Articles in All Categories

Contents

| | |
|--|----|
| Main | 1 |
| Dicing Spindles | 1 |
| <i>Standard Range of Dicing Spindles</i> | 1 |
| Application Bulletins | 3 |
| <i>General Advice on Air Supplies and their Maintenance</i> | 4 |
| <i>How Air Bearings Work</i> | 4 |
| <i>Air Spindles For High Precision Machining</i> | 6 |
| Diamond Turning Spindles | 12 |
| <i>Standard Range of Diamond Turning Spindles</i> | 12 |
| Rotary Tables | 15 |
| <i>Rotary Tables Performance Specification Figures are quoted at 5.5 bar air supply pressure</i> | 15 |
| <i>High Rigidity Rotary Tables</i> | 16 |
| Air Bearing Video | 22 |
| <i>Spindle Balancing</i> | 22 |
| <i>Linear Slide</i> | 22 |

Main
Root Category

There are no articles in this category.

Dicing Spindles
Specifications and Applications

Standard Range of Dicing Spindles

Standard Range of Dicing Spindles

Spindle Model
Minimum Blade Diameter
Length mm
Maximum Wafer Diameter
Maximum Speed RPM
Radial Stiffness 5.5 Bar
Radial Load 5.5 Bar
Round Mounting
Flange Mounting
Gantry Mounting
Motor Type
Motor Power Kw

D01001
50 mm
346
153 mm
40,000
7 N'um
8 kg
YES
NO
NO
AC
1

D03206
100 mm
433
N/A
30,000
12 N'um
15 kg
YES
NO
NO
AC

1.8

D03423
50 mm
330
UNLIMITED
60,000
12 N'um
12 kg
NO
NO
YES
DC
1.2

D03603
100 mm
406
N/A
20,000
20 N'um
22 kg
YES
NO
NO
AC
2

D03604
100 mm
406
N/A
30,000
20 N'um
22 kg
YES
NO
NO
DC
3.5

D03964
50 mm
403
305 mm
60,000
12 N'um
14 kg
NO
YES
NO
DC
1.2

D04063
50 mm
441
254 mm
40,000
10 N'um
10 kg
YES
NO

NO
AC
2.2

D04137
50 mm
442
254 mm
40,000
7 N'um
8 kg
YES
NO
NO
AC
1

D04283
50 mm
346
153 mm
40,000
10 N'um
12 kg
YES
NO
NO
AC
2.2

D04393
50 mm
346
153 mm
40,000
10 N'um
12 kg
YES
NO
NO
DC
2.5

Do4437
75 mm
413
N/A
30,000
20 N'um
22 kg
YES
NO
NO
DC
2.2

Application Bulletins

General Advice on Air Supplies and their Maintenance

The continued reliable performance of the spindle is dependent on its air supply. The following is Loadpoint's recommendations for the air supply equipment and maintenance. Please also refer to the drawing above.

TYPICAL FILTER SETUP

We recommend a three filter arrangement as shown in the figure above.

The first filter we recommend is a pre-filter and regulator. This filter should be a maximum 5 µm particle size. Finer filters can be used (1 µm particle size) though it is important that any filter is maintained to stop clogging and therefore air starvation of the spindle. We normally fit an auto drain 5 µm filter which has an indicator built into the top. The indicator changes color when the flow becomes low at which point the filter cartridge should be changed. Please note that we do not recommend the use of ceramic elements since they cause contamination if the elements are damaged in transit. The pressure regulator should be fitted to maintain 80 p.s.i. (5.5 bar) line pressure.

The second filter unit we recommend in sequence is an activated charcoal element type to absorb any remaining oil vapor in the air supply. It is important to remember that nothing will ruin air bearing spindles quicker than oil vapor condensing in the tiny air jets and so blocking the fine clearances in the spindle.

Air supplies are ideally taken from an oil free compressor or a rotary screw type unit with subsequent freeze drying into an expansion chamber. Air lines should ideally be new to avoid any possibility of contamination. Air line fittings should not use sealing tape, which can (if used carelessly) put tape particles into the downstream air supply, which could then block the vital air jets.

A pressure sensitive electric switch should be fitted between the filters and the spindle to sense any reduction in air pressure due to partial filter blockage. The pressure switch should be set to 70 p.s.i., the spindle drive will then be automatically turned off. This will protect the spindle by stopping its use on low air supply pressure. An audible or visual signal is also valuable to alert the machine operator to a malfunction.

In general, it is important to remember that the cleaner the air, the longer the air bearing spindle will last.

How Air Bearings Work

HOW AIR BEARINGS WORK

The basic principle of operation of air bearings has been established for more than fifty years. An air bearing may comprise of a sleeve separated from a plain shaft by a small gap, typically 5–50 µm. High pressure air is fed through small orifices in the sleeve through to the bearing gap where it flows along the gap and out of the ends of the bearing. Orifice size is matched to the bearing size so that under no load the pressure in the gap, just downstream of the orifice, is approximately half the supply pressure. When a radial load is applied, the gap on one side of the shaft closes down increasing its resistance to airflow and causing pressure to rise. On the opposite side of the shaft, the larger gap has a reduced resistance to airflow and allows pressure to fall. The pressure difference across the bearing gives it the capacity to support the applied load without incurring any metal–metal contact even if there is no shaft rotation.

AIR SPINDLES

Loadpoint air spindles employ two or more cylindrical journal bearings to support radial loads and an opposed pair of flat, annular thrust bearings to support axial loads. A practical design of air spindle also has an integral drive motor and means of work holding.

In a typical spindle compressed air enters through a port on the rear face and is fed through drillings to reservoirs surrounding each journal bearing and reservoirs positioned either side of the thrust bearings. From the reservoirs, air is fed through rows of orifices into the bearing gaps. Exhaust air from the ends of the journal bearings, inner and outer edges of the thrust bearings is vented to atmosphere.

Cooling water enters the spindle through a port on the rear face. From here it is typically ducted along the spindle where it flows through a reservoir surrounding the front bearing. The cooling water is then fed back along the spindle where it passes through a reservoir surrounding the rear journal bearing before exiting through a port on the spindle's rear face.

ADVANTAGES

Compared to other types of spindle, air spindles have a number of performance advantages:-

High Rotational Accuracy – Bearing air films average any surface features to a low level enabling error motions of less than 0.05 μm TIR to be achieved.

Low Vibration – All air spindles are balanced to better than 0.001 gm cm.

High Dimensional Stability – Low bearing friction and water cooling enables negligible thermal growth to be achieved.

High Speeds – Again low bearing friction and the use of water cooling allow bearings to operate at extremely high surface speeds.

High Stiffness - The small clearances inherent to air bearings enables them to be designed with high static stiffness. Air bearings also enable large shaft diameters to be used which enhances the stiffness of spindle assemblies.

Increased Bearing Life – The absence of metal-metal contact ensures an unlimited bearing life provided the air supply is maintained clean and free from oil and water.

Improved Surface Finish – Due to the inherently high accuracy of rotation of air bearings and low vibration, air spindles use in machining applications can produce surfaces with mirror finishes.

Cleanliness – Not requiring any liquid lubricants air spindles are suitable for use in clean rooms.

Ease of Maintenance – Air spindles do not require servicing. Air supplies must however be maintained.

AIR SUPPLY

The air supply is crucial to spindle operation. A clean, dry supply of air at the spindle's specified operating pressure is essential to avoid any long term deterioration in spindle accuracy. Furthermore any loss in air flow or obvious presence of contamination may lead to catastrophic spindle failure.

Quality

Air quality suitable for supplying Loadpoint air bearings is defined in terms of its levels of contamination by solid particulates, water vapour and aerosol oil content.

Contamination levels should conform to the following ISO 8573-1 specifications where concentrations apply to air at 1 Bar pressure and a temperature of 20 deg C.

Type of contamination ISO Class Specification

Solid particles
2
size

Air Spindles For High Precision Machining

Introduction

The development of commercial air bearing machining spindles has been largely driven by the growth in the number of applications for high and ultra precision machining as well as the continual need for higher standards of machine performance. The diversity in the range of high precision machining applications has led to an almost equally diverse range of spindles, highly customised and incorporating a host of special features. For example all air bearing machining spindles have integral drive motors but now they may be frame or frameless, AC or DC brushless, air or watercooled. Spindles may include encoders or resolvers for accurate synchronisation of rotation with other machine functions whilst work/tool holding may be faceplates, collets or airchucks, manually or automatically operated. Through shaft coolant feeds, air turbine drives and integral linear slideways are amongst other special features sometimes required. High precision machining spindles are characterised by the performance parameters:- low motion error, high static and dynamic stiffness and low thermal growth. Improvements in these parameters have resulted from increased customisation, tailoring spindle layouts to individual requirements; increased integration of auxiliary components and hence better optimisation of the overall system as well as incremental developments in bearing design and the manufacturing process. In this article some of the developments contributing to improved spindle performance are discussed and examples of practical spindles described.

Spindle Performance

Although there are a variety of bearing geometry's used for high precision machining attention is confined to an arrangement comprising of cylindrical journal and plain thrust bearings. Cylindrical and flat, annular bearing geometry's can be manufactured to the high standard of precision and finish essential for low motion errors. They also exhibit low thermal distortion that means they are suitable for both high and low speed operation.

Bearing Stiffness - However speeds in the vast majority of high precision machining applications are modest and the emphasis on bearing design is usually to achieve maximum static stiffness for the required speed range. The stiffness of an air bearing is inversely proportional to its internal clearance and therefore maximum stiffness is achieved by minimising clearance. But there are limits to how far clearance can be reduced, one is thermal distortion the other is the geometrical accuracy to which the bearings can be manufactured. Thermal distortion arises from small frictional losses in the bearings and somewhat larger power losses in the drive motor, both of which increase with speed. On most spindles, heat losses from housings are higher than those from shafts and a temperature gradient is set up across the bearings that reduces their clearance. Whilst water cooling may effectively control spindle housing temperatures and overall spindle growth, temperature gradients across the bearings are not necessarily reduced and may even be increased. Allowing for thermal distortion, bearing clearances cannot be reduced to the extent that opposing surfaces come into contact under operational conditions and in practice the

bearing is designed to take maximum load at a safe working gap. The larger the surface geometry errors, the larger this gap and the bearing design clearance. Over the last 20 years bearing clearances on high precision air spindles have been reduced by approximately 40 % and is one of the reasons why higher stiffnesses are now being achieved. The reductions are due mostly to improved manufacturing methods and better understanding of thermal distortion.

Improvements in the internal design of the bearing have also benefited stiffness. Essentially these are due to more sophisticated computer models predicting more accurately the effects of air flow through feed orifices and the bearing gap. Early bearing designs were based upon one dimensional air flow models, whereas now two dimensional models include effects such as the cross flow of air around journal bearings and dispersion of air out of feed orifices, thus enabling better optimisation of the air feed arrangement.

Spindle Stiffness and Damping - Overall radial stiffness of the spindle depends not only on the bearings but the spindle layout and the rigidity of other components such as the shaft and work holding arrangement. Computer models for determining the elastic deformation of a bearing & shaft system have enabled better optimisation of the spindle layout, minimising the cantilevering effect of an overhung work position. The models have also been vital in improving the dynamic behaviour of spindles. Critical speeds in the operating speed range can usually be avoided and dynamic stiffness at the work position optimised by judicious choice of system parameters. Fig 1 is an example of the radial dynamic response of a lens turning spindle measured at the work position. This spindle operates at speeds of up to 10 000 rpm and the first critical speed occurs at 295 Hz. The magnitude of the response at 610 Hz defines the dynamic stiffness of the spindle which in this case is 5.3 N/ μm and compares to a static stiffness of 17.2 N/ μm . Dynamic stiffness of an air spindle is mostly dependent on bearing damping and the typical response of fig 1 shows this to be high compared to the level of damping found in most mechanical structures.

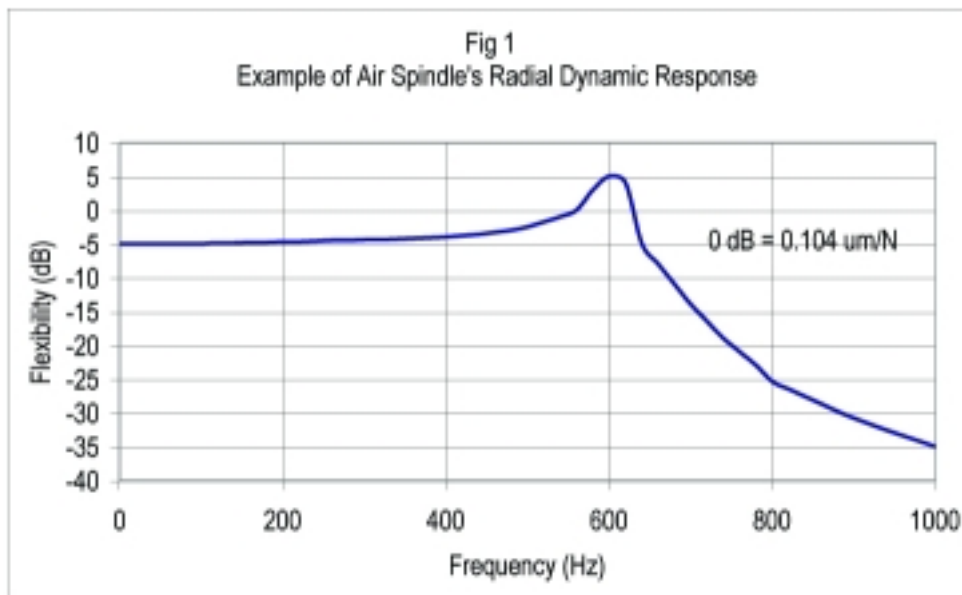


Fig. 1
Motion Error ‐ Is normally characterised by three parameters, basic eccentricity, higher order synchronous motion errors and asynchronous motion errors. These parameters are

measured in both axial and radial directions. In general, air spindle motion error is primarily a function of the bearings, magnetic imbalance in the motor and mechanical out of balance. Many ultraprecision machining applications now require peak–peak motion errors lower than 0.05 μm so all three sources are critically important.

The basic eccentricity in motion error is normally controlled by attention to bearing alignments and out of balance. Micron level manufacturing precision and two plane balancing to a high standard, ie ISO1940-1973 G0.4 is generally necessary to meet the more demanding specifications.

Air bearings can produce both synchronous and asynchronous motion. On stable bearing designs the latter is normally low in level and is mostly a function of the bearing air. Ensuring that the supply air is free from pressure pulses and contaminants is essential for low asynchronous motion error. Minimisation of air turbulence within the bearing and random pressure fluctuations in the exhaust air can also help to reduce asynchronous motion errors. Synchronous motion errors arise if the bearing geometry departs from perfect round, (or flat in the case of a thrust bearing),.The air film in an air bearing averages the effect of bearing geometry errors to a low level and ratios of motion error/geometry error as low as 0.05 have been observed in practice. However sub micron precision of bearing surfaces is still required to meet most ultraprecision motion specifications. Improvements in manufacturing methods have had an important effect on motion error and have enabled errors to be reduced from about 0.2 μm typical on commercial machining spindles 20 years ago to the present level of 0.05 μm peak-peak.

Motion errors arising from drive motors are usually dominated by synchronous movements characterised by harmonics of pole passing frequency. Asynchronous motion errors can occur but are usually low in level. Magnetic forces necessary to produce required drive torques are high and although motors have poles arranged opposite each other to balance out the forces there are several factors which can leave a residual magnetic imbalance. Thus on air spindles fitted with integral frameless motors the motion errors which can result are determined by the magnitude of the forces and the stiffness of the air bearings. High precision air spindles may also use self contained precision motors mounted inline at the rear of the spindle. Such motors benefit from the additional stiffness of precision grade ball bearings that are effective in limiting the motion errors due to magnetic forces. The ball bearings can be a source of motion error but vibration forces are generally small compared to those that would otherwise result from magnetic imbalance and are isolated from the air spindle by a flexible coupling. From the point of view of reducing magnetic imbalance, motor design and manufacturing methods have improved significantly during the last 10 years with the result that now both frame and frameless motors with imbalanced magnetic forces of less than 1 N can be obtained.

Thermal Distortion – Overall thermal growth of high precision machining spindles is limited by locating the thrust bearing close to the work position and placing the main heat source - the drive motor, towards the spindle rear. In the more critical applications forced cooling is used to gain control of thermal growth. The type and degree of cooling is normally matched to application requirements. Chilled water cooling affords the best results, allowing changes in spindle dimensions with time to be kept as low as 1 μm .

Examples of High Precision Spindles

The above developments have been used to design a wide range of high precision spindles of which the following are examples.

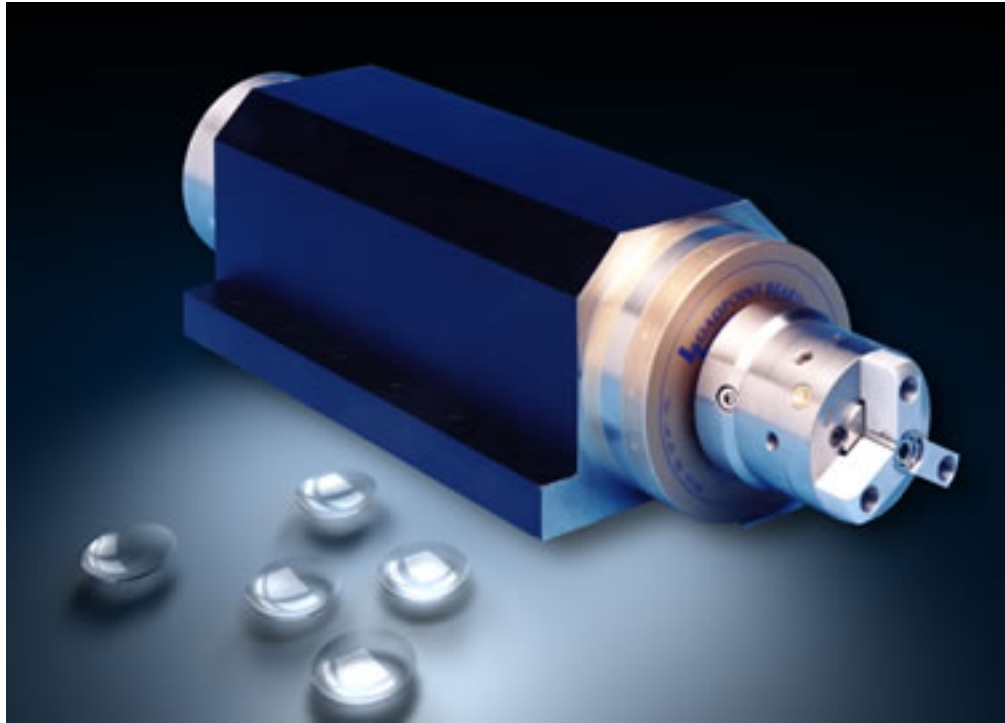


Fig. 2

Contact Lens Turning Spindle - Fig 2 shows an example of a contact lens turning spindle. The requirement is to generate an axisymmetric lens form by single point turning and achieve a surface finish needing only a minimum of polishing in a subsequent operation. In this application the workpiece is easily deformable and the use of an air operated chuck allows gripping force to be accurately controlled by air pressure. Furthermore a non contacting air slip ring arrangement built into the spindle enables automatic chuck operation and hence rapid work change over. Chuck jaw relocation accuracy is better than 1 μm . The aerostatic bearing arrangement provides overall spindle stiffnesses of more than 35 and 7 $\text{N}/\mu\text{m}$ in axial and radial directions respectively and generates an asynchronous motion error of less than 0.05 μm peak-peak. The spindle is driven by an integral, air cooled 300 watt AC induction motor. Maximum speed is 10 000 rpm, limited by centrifugal force acting on the chuck jaws. Surface finishes achieved by this spindle are typically better than 0.1 μm Ra.

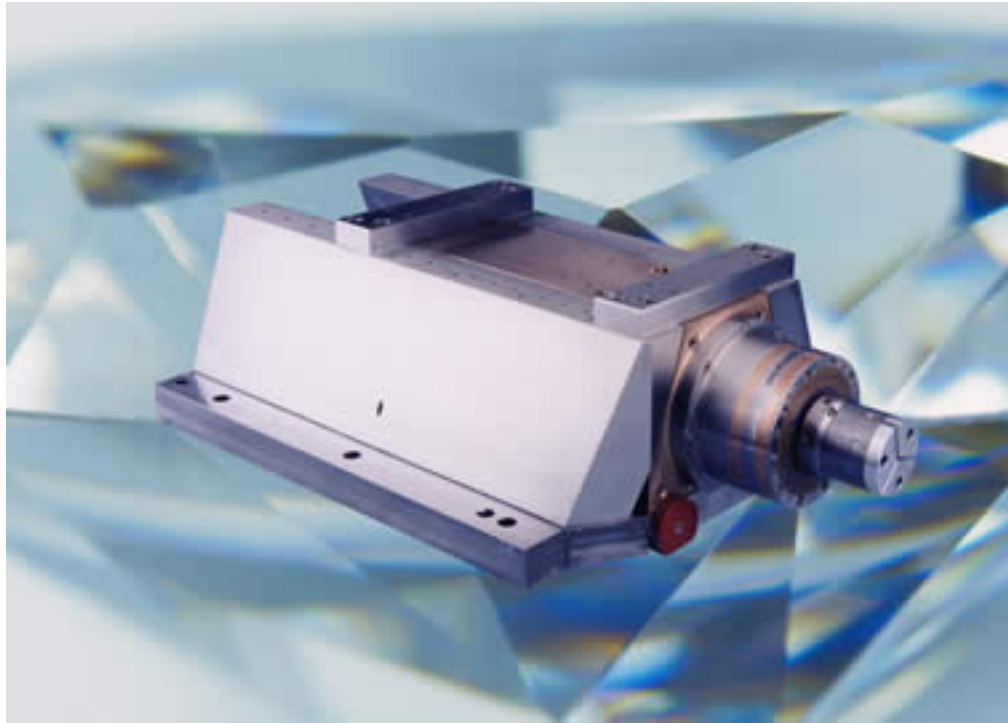


Fig. 3

Diamond Turning Spindle - Fig 3 is an example of a diamond turning spindle with integral air bearing slideway. The requirement is to generate accurate workpiece forms with optical surface finish. The form is generated by moving the spindle in an axial direction as the tool moves radially with respect to the axis of rotation. An air bearing slideway has the advantage of no stiction and therefore enables positional accuracies of less than 1 μm to be obtained. This spindle also features an air cooled DC brushless motor, high resolution encoder and automatic, dead length collet or air chuck for work holding. Overall spindle stiffnesses are better than 85 $\text{N}/\mu\text{m}$ and 8 $\text{N}/\mu\text{m}$ in axial and radial directions respectively. Maximum speed with collet is 12 000 rpm and the use of a DC brushless motor provides a maximum continuous torque of 2 Nm over the relatively wide speed range of 1000 rpm – 12 000 rpm. This spindle achieves surface finishes better than 0.1 μm .

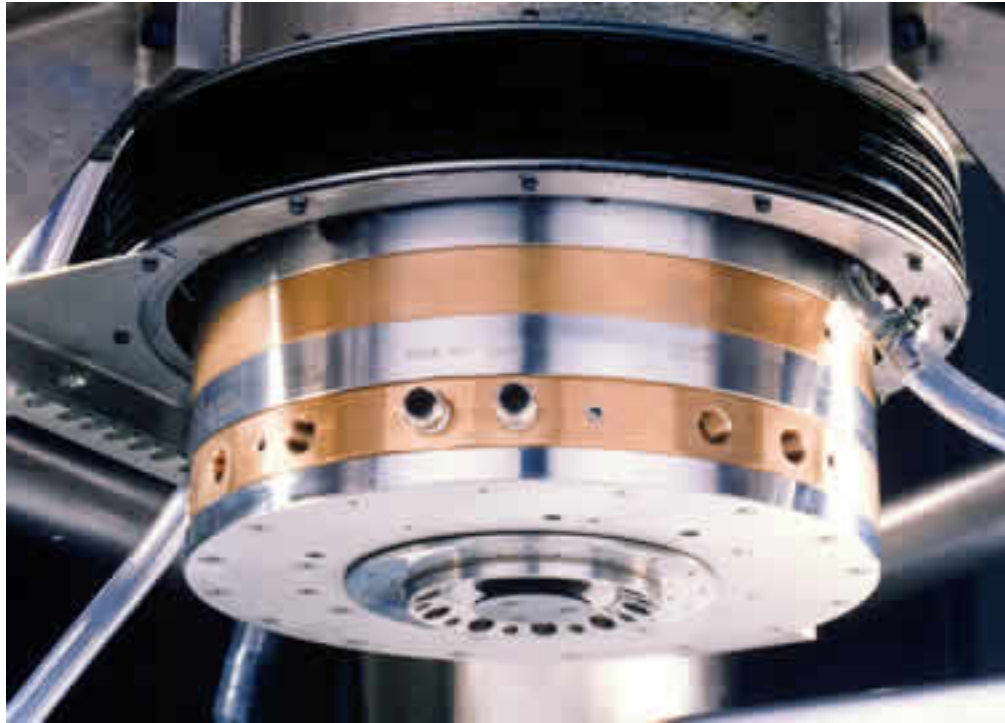


Fig. 4

Cup Grinding Spindle - Fig 4 shows a cup grinding spindle fitted to Cranfield University's Tetraform 'C' grinding machine. The machine is required to achieve optical surface finishes from grinding for both brittle materials and hard metallic surfaces at relatively high material removal rates. In terms of spindle performance these requirements demand high static and dynamic stiffnesses and low motion errors over a wide speed range. The spindle has static axial and radial stiffnesses of 400 N/um and 100 N/um respectively and a maximum speed of 6000 rpm. Chilled water cooling of the bearing housing and through the shaft coolant feed also ensures axial thermal growth of the spindle is low and coolant is fed efficiently to the cup grinding wheel. To minimise motion errors the drive motor is a framed DC brushless type fitted to the rear of the spindle. This spindle has been used to grind a variety of materials such as glass, silicon and M50 tool steel. Surface finishes consistently better than 10 nm Ra and as low as 1 nm Ra have been achieved.

Concluding Remark

Incremental developments in air bearing technology and the associated manufacturing process has enabled aerostatic spindles to be designed and built to meet a wide range of high and ultra precision machining requirements. Ongoing developments in air bearing technology and auxiliary spindle components are expected to lead to further improvements. Both in the standard of precision that can be reached as well as the range of conditions that can be achieved.

Acknowledgement

The authors would like to thank Professor J. Corbett of Cranfield University for kind permission to publish details of the air spindle used on Tetraform C.

Diamond Turning Spindles

Specifications and Applications

Standard Range of Diamond Turning Spindles

Standard Range of Diamond Turning Spindles

Model
Body Diameter mm
Length mm
Spindle Nose
Maximum Speed RPM
Radial Stiffness 5.5 Bar
Axial Stiffness 5.5 Bar
Encoder
Dead Length Stop
Motor Type

Motor Power KW

D01983
76.2
355
COLLET
12,000
8N'um
20N'um
NO
NO
AC
0.4

C02256
76.2
305
VACCUM COLLET
18,000
8N'um
20N'um
NO
NO
AC
0.35

D02370
SQUARE
370
COLLET
10,000
8N'um
50N'um
NO
NO
AC
0.35

D02385
SQUARE
343
50mm CHUCK
10,000
8N'um
50N'um
NO
YES
AC
0.35

D02442
SQUARE
430
COLLET
15,000
10N'um
80N'um
NO
NO
AC/DC
0.35/0.75

D04258
76.2
365
COLLET
18,000
5N'um
22N'um
NO
YES
AC
0.31

D02511
76.2
360
50mm CHUCK
15,000
7N'um
60N'um
NO
YES
AC
0.35

D02870

76.2
424
COLLET
10,000
18N'um
60N'um
YES
NO
DC
0.75

D03023
76.2
351
VACUUM COLLET
10,000
8N'um
20N'um
YES
NO
DC
0.75

D03127
76.2
442
50mm CHUCK
10,000
18N'um
60N'um
YES
NO
DC
0.75

D03367
76.2
417
COLLET
10,000
22N'um
90N'um
NO
NO
AC
0.35

D03096
76.2
429
COLLET
10,000
22N'um
90N'um
NO
NO
DC
0.75

Rotary Tables

Specifications and Applications

Rotary Tables Performance Specification Figures are quoted at 5.5 bar air supply pressure

Rotary Tables Performance Specification Figures are quoted at 5.5 bar air supply pressure

Axial Stiffness
200 N/um

Radial Stiffness
70 N/um
(at position P)

Maximum Axial Load
136 Kg

Maximum Radial Load
61 Kg
(at position P)

Axial Running Error
0.25 um
(peak to peak)

Tilt Motion Error
0.013 m/rad
(peak to peak)

Maximum Speed
15 rpm
(For recommended drive and encoder)

Maximum Continuous Torque
6.5 Nm

Maximum Peak Torque
75 Nm

High Rigidity Rotary Tables

High Rigidity Rotary Tables

Loadpoint Bearings, a leading supplier of high precision rotary tables to the electronics and machine tool industries offers the H Section line of high rigidity rotary tables with double thrust plate design for increased rigidity under load.

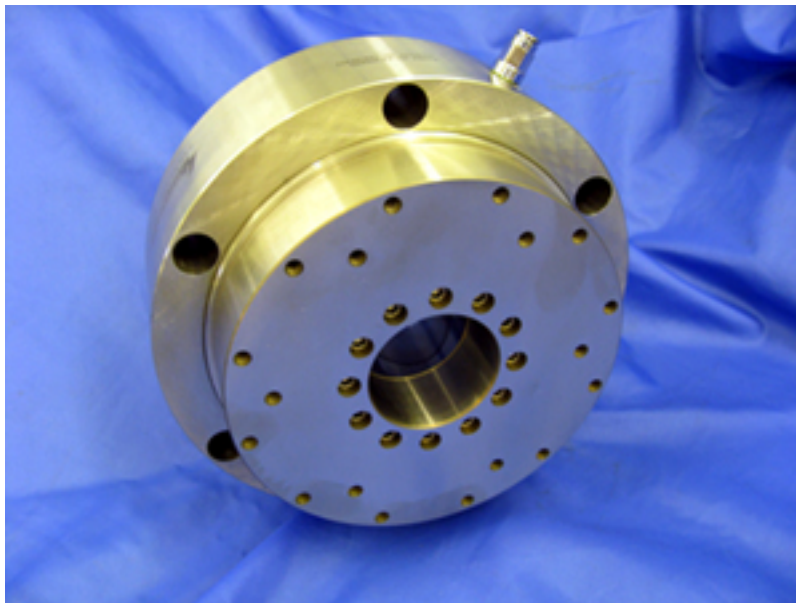
All high rigidity rotary tables feature low axial motion errors 20-50nM and less than 1 micron static runout (once per revolution).

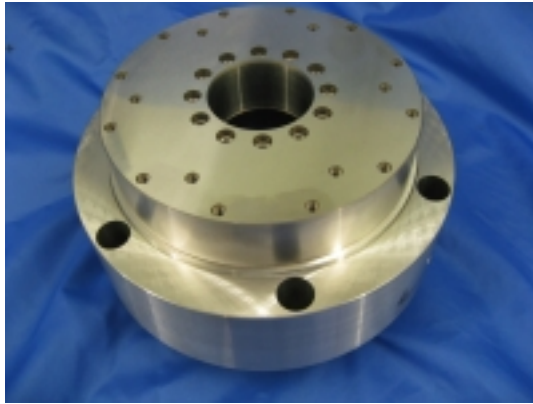
All of our high rigidity rotary tables may be driven by belt with an external motor or direct drive motor. Positional resolution down to 0.1 arc/seconds with encoder and DC brushless motor. Loadpoint Bearings can give application support on motors, encoders and controller.

Features include large diameter central through hole for vacuum or coolant. Rotary couplings can also be fitted and supplied.

These High Rigidity Rotary Tables are compatible with other short, blocky shaped spindles made for oversize loads and still give optical quality resolution.

Improve your rotary table technology with the benefits of:

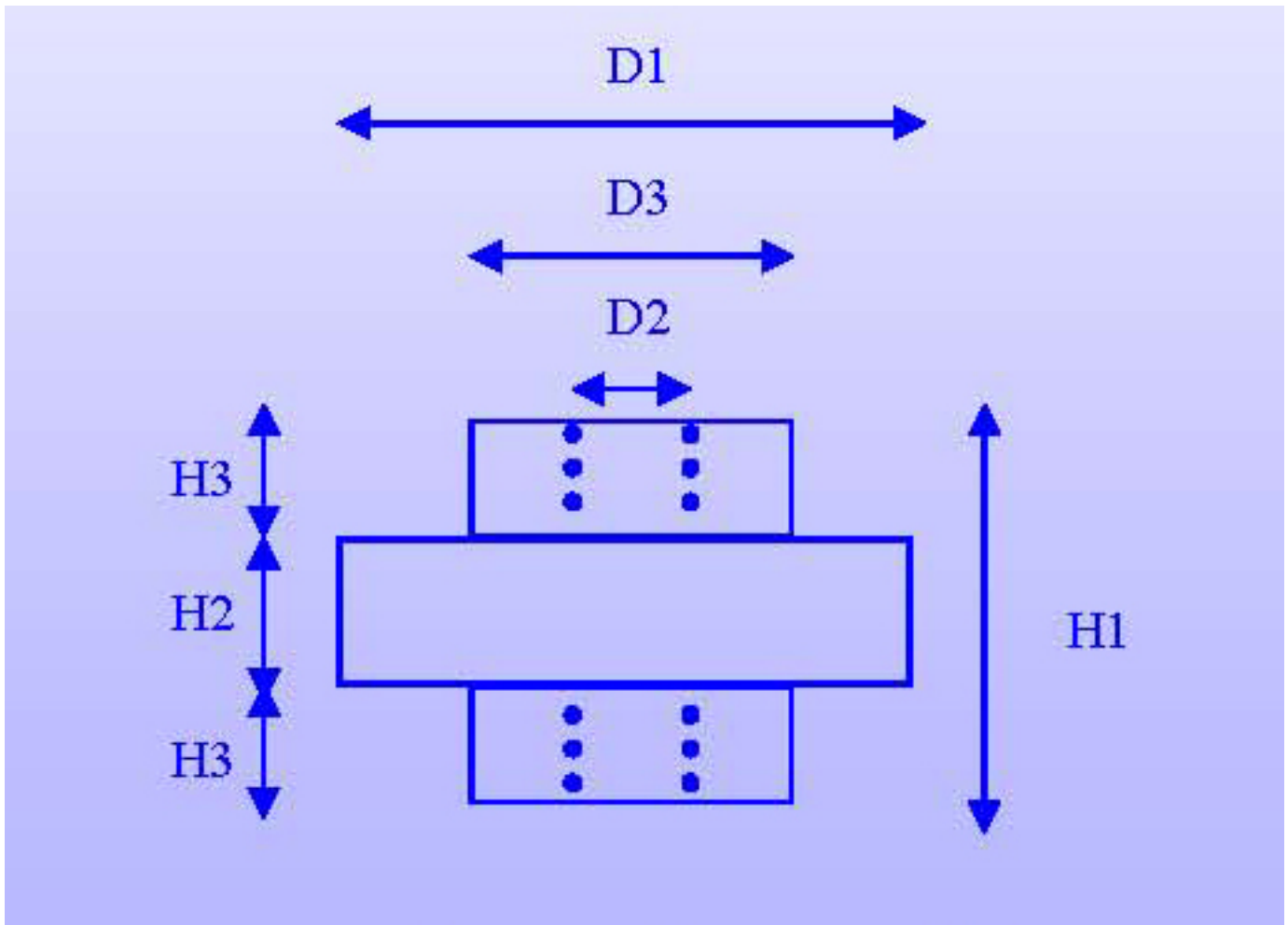




Axial stiffness range from 600-1235N/microns

Load range from 1400-3500N

RPM range 1500-5000 RPM



SPECIFICATION

UNITS/PN#

D06960/6

D06960/8

D06960/10

D06960/12

D1

mm

200

240

300

350

D2

mm

50

60

80

100

D3

mm

155

195

247.6

300

H1

mm

130

160

170

240

H2

mm

70

74

76

90

H3

mm

30

43

47

75

Air Pressure

Bar

6

6

6

6

Air Consumption

L/min

15

20

35

40

Axial Stiffness

N/u

600

705

1176

1235

Radial Stiffness

N/u

150

167

206

392

Radial Load

Nm

500

600

700

800

Axial Load

Nm

1400

1800

3000

3500

Axial Runout (dynamic)

nM

Air Bearing Video
Short Flash Videos of Working Air Bearings

Spindle Balancing

This video shows a 2 inch air bearing spindle being balanced.

Linear Slide

LINEAR SLIDE D04719